

# GENERAL INFORMATION ABOUT KONE GLIDING DOORS

KONE gliding doors are the ideal solution for working environments where quiet and hygienic conditions are required.

The KONE gliding door opens and closes very smoothly with just a light touch thanks to the magnetic fields that hold it in place, instead of traditional rail and rollers. This unique solution is suitable for a wide range of different environments, including hospitals, homes for the elderly or people with disabilities, as well as offices and hotels.

KONE gliding doors are available with both manual and automatic operation.

## CONVENIENT, SAFE SOLUTION FOR MEDICAL FACILITIES

KONE gliding doors can be suspended entirely within the door groove, saving space and eliminating the risk of collision with beds and other furniture or equipment. There is no raised threshold, making it easier to move patients in beds or wheelchairs. The gliding door profiles are of 1.5 mm thick steel, suitable for heavy duty environments.

Because the magnets in the aluminum slide at the top of the door form a closed magnetic circuit, they do not interfere with any nearby medical equipment.

## IDEAL FOR HYGIENE-CRITICAL ENVIRONMENTS

Because the KONE gliding doors have few mechanical parts there is minimal need for lubricants, which can attract dust and other particles. The risk of contamination spread can be reduced by decreasing the number of touch moments, for instance by combination of opening switches with the operator. Hand-to-hand transfer can be virtually eliminated by installing the door inside the wall, thereby protecting the entire door panel. Panels are quick and easy to remove and reinstall for disinfection purposes.

## SPACE EFFICIENT AND PRACTICAL

The KONE gliding door is up to 15% more space efficient than standard swing door solutions, which require 1.5–2 square meters of floor space for opening. The optional privacy module enables two or more residents to access the same bathroom, providing significant space savings in even the smallest of rooms.

## KEY BENEFITS

- Convenient, hygienic, silent operation
- Up to 15% more space efficient than standard swing door solutions
- Long lifespan with minimum wear and tear
- Can be integrated with patient lifting systems (ceiling lifts)
- Highly customizable: manual, automatic, and fire-resistant, on-wall or in-wall gliding operation
- Closed system with minimal dust penetration
- Quick and easy maintenance



KONE manual gliding door integrated with a patient lifting system

TECHNICAL SPECIFICATION	
STANDARD FRAME COLOR	RAL 9010
DOOR PANELS	Available with several finishes
DOOR WEIGHT	25 – 82 kg depending on door type, panel structure and dimensions
MAXIMUM DOOR HEIGHT	2300 mm
MAXIMUM DOOR WIDTH	Single 1800 mm Double 2250 mm



Gliding vs swing doors can save up to 15% of space based on opening area that swing doors require

# KONE AUTOMATIC GLIDING DOORS

Automatically operated KONE gliding doors use a linear motor, that requires no mechanical parts such as running rail, carriages, belts, or pulleys to support the weight of the door panel. This will decrease the noise level and reduce the friction, making movement of the door lighter. With a reduced number of moving parts, the door operator is among the smallest on the market, which makes the door visually appealing and enables a range of unique installation possibilities. Plug and play sensor connection allows quick installation.

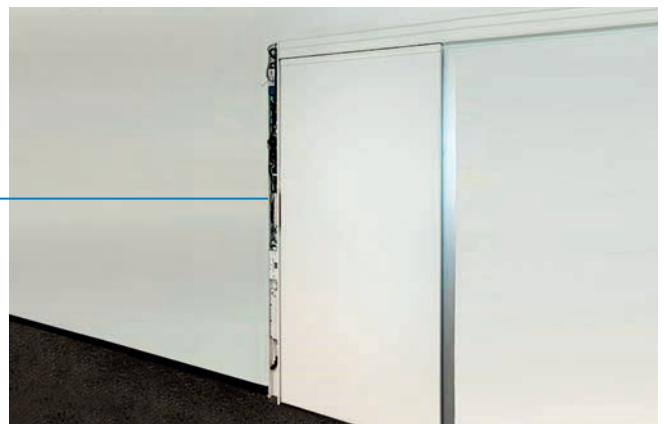
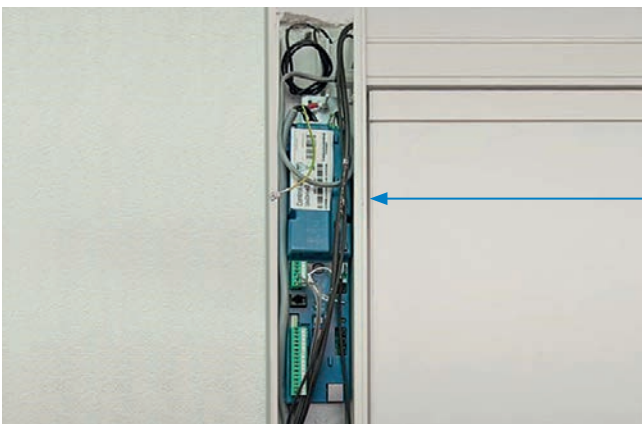
## FEATURES AND OPTIONS

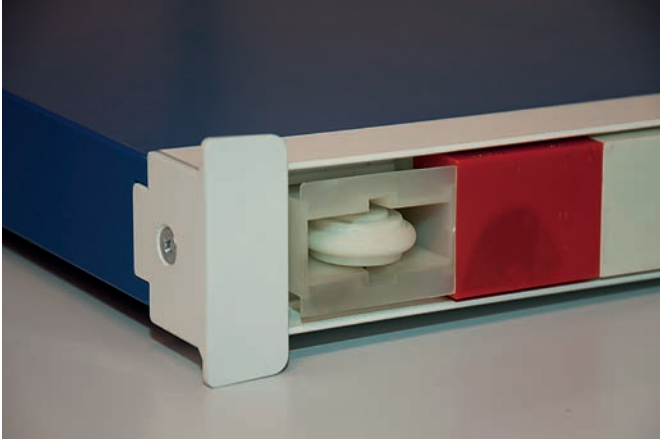
- Single
- On-wall or in-wall installation



## KEY BENEFITS

- Can be integrated with a wide range of building services, including:
  - Use of push-buttons and program switch without cabling
  - Programmable input and outputs allows for a variety of options and functions – e.g. privacy modules, door status signaling, airlock etc.
  - Bluetooth Low Energy beacon support for indoor navigation and door identification
- New door control unit can be seamlessly mounted in the frame of the door, eliminating the need of having a false ceiling to place the control unit behind
- Software features make it possible to configure the door for low-energy operation, which eliminates the need for additional safety sensors (while the door will be fully compliant with the EN 16005 standard)
- Reduce noise and friction
- Easy to access for maintenance purposes

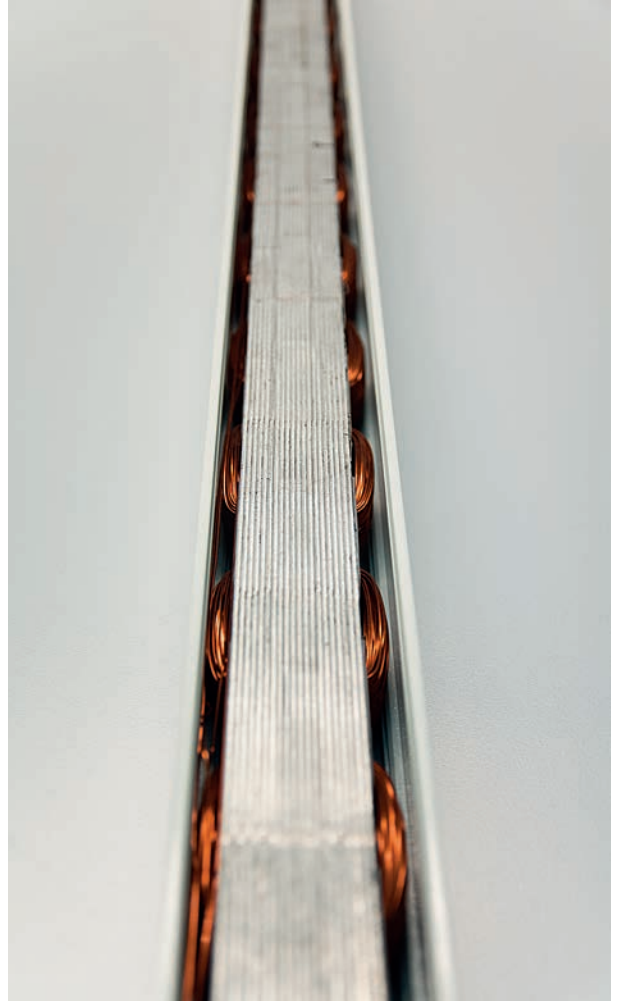




Top door leaf with rollers and magnets



Top door leaf connected to operator



Linear motor inside operator

### TECHNICAL SPECIFICATION

DOOR OPERATION	INSTALLATION METHOD	DOOR OPTION	HEIGHT (mm)	WIDTH (mm)	WALL THICKNESS (mm)
MANUAL	In-wall	Single	2600	1400	100/125/150
		Single, 30 min fire-resistant, automatic closing in case of fire	2600	1400	100/125/150
		Double	2600	2800	100/125/150
		Soft-close			
		Prepadded for later automation	2600	1400	100/125/150
		With patient rail	2600	1400	100/125/150
	On-wall	Single	2600	1400	100/125/150
		Double	2600	2800	100/125/150
Prepadded for later automation		2600	2800	100/125/150	
With patient rail		2600	2800	100/125/150	
AUTOMATIC	In-wall	Single	2600	1400	100/125/150
	On-wall	Single	2600	1400	100/125/150

# KONE MANUAL GLIDING DOORS

Manually operated KONE gliding doors provide smooth and near-silent operation, requiring only light touch to open and close.

## FLEXIBLE INSTALLATION OPTIONS

The door panel can be mounted on the wall, but typically it is suspended in the wall to save space. KONE gliding doors are available in a wide range of different sizes and designs.



Contact your local KONE sales representative to discuss your requirements and find out more about our range of customization options.

## MINIMAL OPERATING COSTS

The gliding door construction does not require a rail, and the few moving parts are highly durable. Because wear and tear is minimal compared to standard manual and automatic doors, KONE gliding doors have low maintenance requirements.

Check Environmental Product Declaration for KONE manual gliding doors on <http://ibu-epd.com/en/epd-program/published-epds/>

## THE ONLY FIRE-RESISTANT GLIDING DOOR SOLUTION

KONE manual gliding door with in-wall installation is available with 30-minute fire resistance. The fire-protection performance is verified by a third party and fulfills EN 1634-1: 2008, EN 13501-2: 2007 and A1: 2009 standards.

## FEATURES AND OPTIONS

- Single
- Double
- On-wall or in-wall installation
- Fire-resistant E1 30 option (in-wall)
- Soft-close option
- Drop seal option ensures a tight closing of the door, because of a drop seal installed underneath the door. When the door closes, the drop seal will close the gap between the door panel and the floor.

## SOFT-CLOSE OPTION FOR MANUAL GLIDING DOORS

DESCRIPTION	Feature enables the door automatic slow down in closing movement and bringing the door to its fully closed position.
APPLIATIONS	Can be installed on the in- and on-wall gliding door systems. It is not possible to use a soft-close option on fire doors and in combination with drop seal option.
SPECIFICATIONS	Max. weight: 80 kg Durability: 100,000 cycles



KONE provides innovative and eco-efficient solutions for elevators, escalators, automatic building doors and the systems that integrate them with today's intelligent buildings.

We support our customers every step of the way; from design, manufacturing and installation to maintenance and modernization. KONE is a global leader in helping our customers manage the smooth flow of people and goods throughout their buildings.

Our commitment to customers is present in all KONE solutions. This makes us a reliable partner throughout the life cycle of the building. We challenge the conventional wisdom of the industry. We are fast, flexible, and we have a well-deserved reputation as a technology leader, with such innovations as KONE MonoSpace®, KONE NanoSpace™ and KONE UltraRope®.

KONE employs close to 52,000 dedicated experts to serve you globally and locally.

## KONE CORPORATION

### Head office

Kartanontie 1  
P.O. Box 8  
FI-00331 Helsinki  
Finland  
Tel. +358 (0)204 751

### Corporate offices

Keilasatama 3  
P.O. Box 7  
FI-02151 Espoo  
Finland  
Tel. +358 (0)204 751

[www.kone.com](http://www.kone.com)

The background image shows a modern interior hallway. A light-colored wood-grain door is partially open, revealing a dark grey wall in the room beyond. On the dark wall, there is a framed picture of hands holding a flower and a white light switch. To the left of the door, a white wall features a yellow handrail. The floor is a light-colored carpet.

# INTERIOR DOOR SOLUTIONS FOR SMOOTH AND CONVENIENT PEOPLE FLOW

KONE gliding doors